

# CABLE CRANES



## BENEFITS

- Soil protection
- Application: uphill, downhill and along a level
- Economic and ergonomic operation
- Short set-up and tear-down times



KSK-1  
Transport position

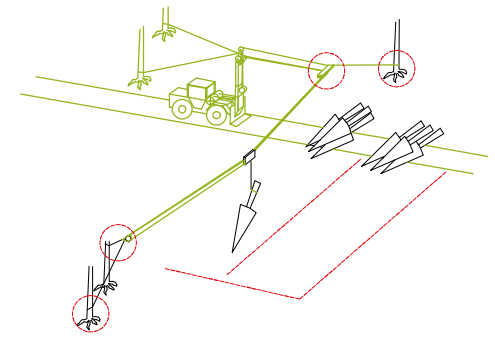
KSK-1  
Extension of tower / Hydraulic self-releasing  
cable winch



KSK-3  
Side view

# KSK-1 SHORT-DISTANCE CABLE CRANE

**SOIL PROTECTION UPHILL AND DOWNHILL |** The RITTER short-distance cable crane represents a high-performance system for thinning small to medium-sized trees. Timber can be moved uphill, downhill or along a level (in marshy and swampy environments) while protecting the soil. The process combines the retrieval advantages of cable crane technology with the ergonomic advantages of the combined catenary curve process for thinning stands inaccessible to vehicles. The KSK is available in either a mounted, built-in or trailer version. The benefit of the trailer version is the independence of the driving vehicle. Due to the extremely short set-up and tear-down times a rapid location change is possible at any time. By using a travelling crab in cross-beam version, even convex slopes can be thinned.



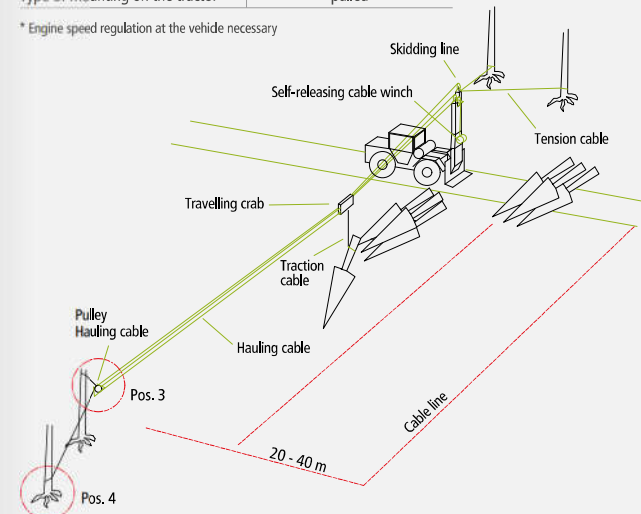
## ACCESSORIES

- Saddle with anchoring device
- Additional pulley for low cable feed
- Redirection for lateral vehicle positioning (see figure on the right)
- Hydraulic extension of tower 1500 mm
- Mechanically folding extension of tower 2000 mm

## KSK-1 SHORT-DISTANCE CABLE CRANE TECHNICAL DATA

TYPE	KSK-1
Line length/ Skidding line length approx.	200m/11,5mm
Traction cable approx.	210m/ 9mm
Towable mass approx.	1.000kg
Hauling cable approx.	420m/ 6mm
Tower height incl. telescope max.	7100mm
Transport height	3.400mm
Weight without cable	2.900kg
Required engine power	80PS
Number of tension winches	2
Control	HBC radio
Number of operators	1
Travelling crab	optional
Cable velocity / 1000rpm	*0,2-1,3m/s
Semi-automatic cable opening	Serie
Type of mounting on the tractor	pulled

\* Engine speed regulation at the vehicle necessary



The patented, self-releasing cable hook allows economic and ergonomic operation by a single person in even the most difficult terrain.



KSK-1 Travelling crab



KSK-1 Saddle travelling crab



# KSK-3 SHORT-DISTANCE CABLE CRANE

**POWERFUL EVEN IN DIFFICULT TERRAIN** | The KSK-3 may be combined with any RITTER double-drum cable winch. The system may thus be used in various ways either as direct-mounted winch or as short-distance cable crane. The hydraulic height adjustment of the tower allows setting up the best section for skidding the logs. With the KSK-3, timber can be moved uphill, downhill or along a level while protecting the soil. Thanks to the patented gliding hook combined with the limit stop cut-off it is possible for only one person to do the job in an economic and ergonomic way even in difficult terrain.

KSK-3 S 66



KSK-3 Limit stop cut-off



KSK-3 Travelling crab

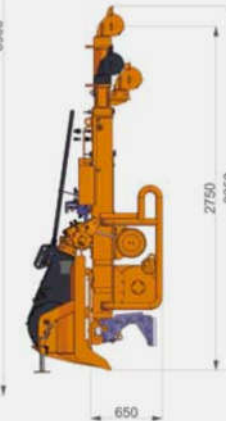


KSK-3 Mounting and dismounting



2x Hubn = 1500 (different positions possible)

KSK-3 Technical Data



KSK-3 Working position



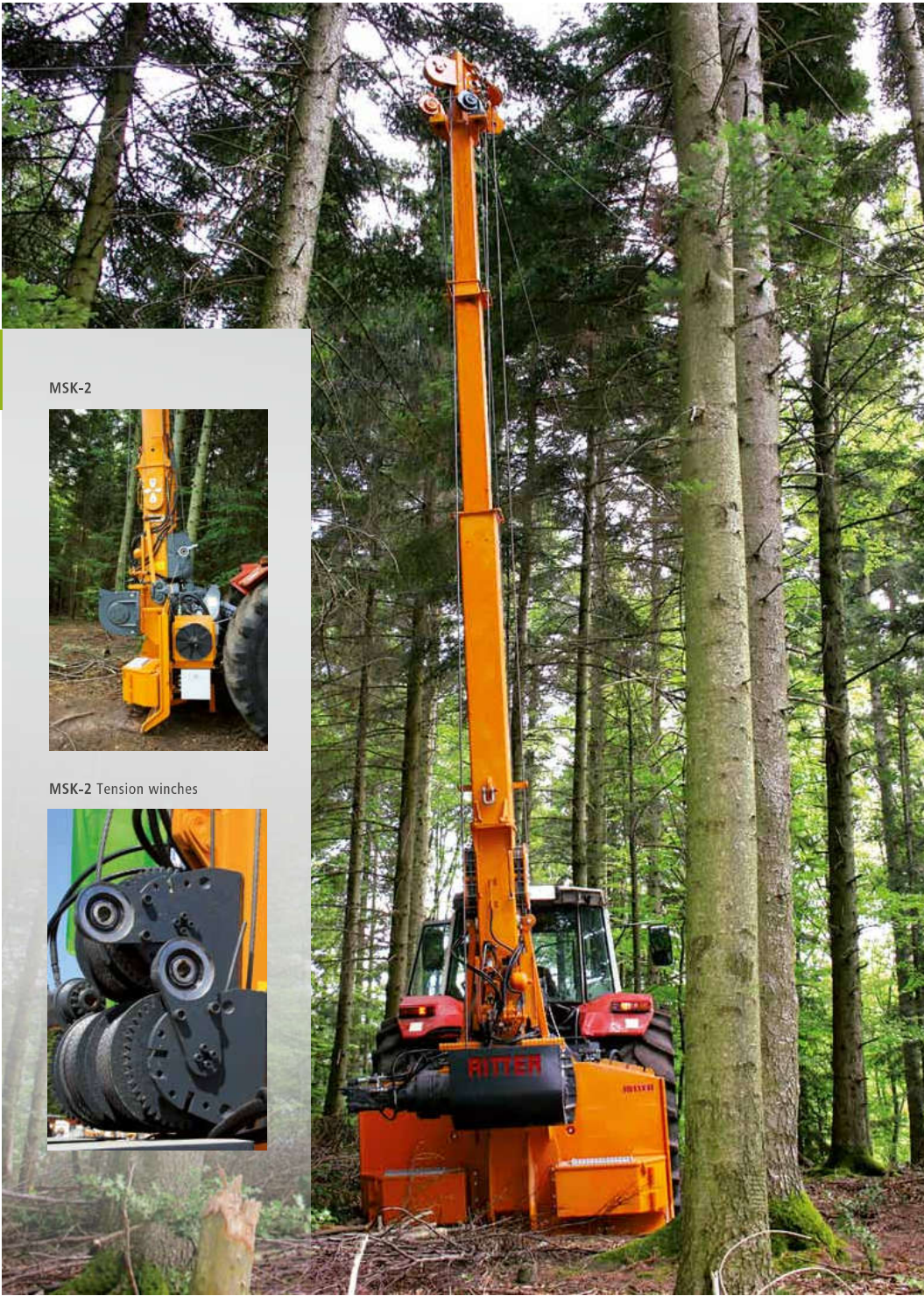
KSK-3 Transport position

## KSK-3 SHORT-DISTANCE CABLE CRANE TECHNICAL DATA

(Technical data in combination with RITTER S 70 DK)

TYPE	KSK-3 S 70	KSK-3 S 66
Line length/ Skidding line length approx.	110m/ 12mm	190m/ 11,5mm
Traction cable approx.	160m/ 10mm	210m/ 10mm
Towable mass approx.	1.000kg	1.000kg
Hauling cable approx.	300m/ 6mm	400m/ 6mm
Tower height incl. telescope max.	6.500mm	6.500mm
Transport height	3.200mm	3.300mm
Weight without cable	1.900kg	2.100kg
Required engine power	70PS	80PS
Number of tension winches	2	2
Control	HBC radio	HBC radio
Number of operators	1	1
Travelling crab	optional	optional
Cable velocity / 1000rpm	*0,2-1,2m/s	*0,2-1,2m/s
Semi-automatic cable opening	standard	standard
Type of mounting on the tractor	3-point linkage	3-point linkage

\* Engine speed regulation at the vehicle necessary



MSK-2



MSK-2 Tension winches



# MSK-2 MEDIUM-DISTANCE CABLE CRANE

**INNOVATIVE CONCEPT FOR MAXIMUM POWER |** The MSK-2 medium-distance cable crane allows skidding sections up to 400 meters. The modular system can be used either as a direct-mounted winch with a large winding capacity or in combination as a medium distance cable crane. A forced spooling built in on both sides provides perfect cable winding quality of the entire winch. The hydraulic driven winch provides the maximum tractive power over the whole cable length thanks to the innovative RITTER constant traction principle.

MSK-2 Technical data, dimensions in mm

## MSK-2 MEDIUM-DISTANCE CABLE CRANE TECHNICAL DATA

TYPE	MSK-2
Line length/ Skidding line length approx.	400m/15mm
Traction cable approx.	500m/ 8mm
Towable mass approx.	1.000kg
Hauling cable approx.	800m/ 6mm
Tower height incl. telescope max.	10.800mm
Transport height	3.800mm
Weight without cable	4.500kg
Required tractor power	120PS
Number of tension winches	3
Control	2x HBC radio
Number of operators	2
Travelling crab	optional
Cable velocity / 1000rpm	*0-3,5m/s
Semi-automatic cable opening	standard
Type of mounting on the tractor	pulled

\*continuously adjustable cable velocity standard



MSK-2 Transport position